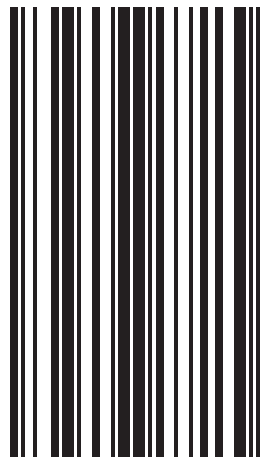


RESET of the BPS 8 on FACTORY SETTINGS

If the device shall be run in SERVICE-MODE ,
please proceed as follows:

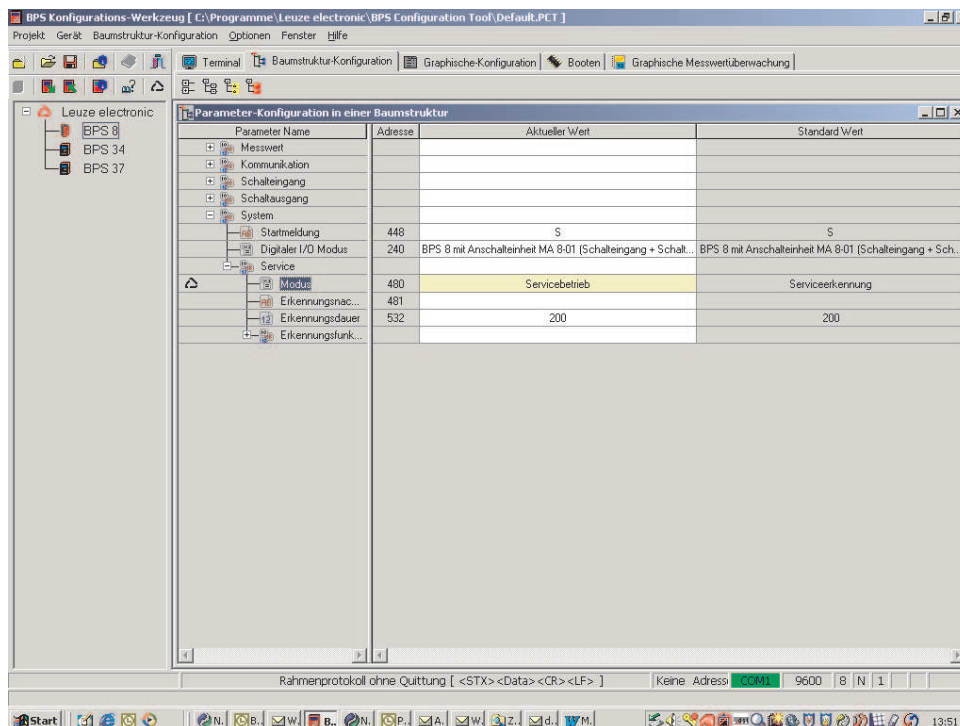
- 1** Run the software *BPS-CONFIG*
- 2** Power off the BPS 8
- 3** Power on the BPS 8
- 4** Move the service label (SRV) within the
BPS 8 scanning beam



SRV

In order to run the device permanently in SERVICE-MODE, please proceed as follows:

5 Open the tree structure in the software *BPS-CONFIG*



6 Change the parameter mode from “*Service detection*” to “*Service mode*”. The BPS 8 can now be run in SERVICE MODE, without using the service label again. The SERVICE MODE is maintained even after power on / power off

7 If the BPS 8 is run in binary protocol mode, the BPS 8 has to be reset back to “*Service detection*”. The binary protocol is maintained even after power on / power off