



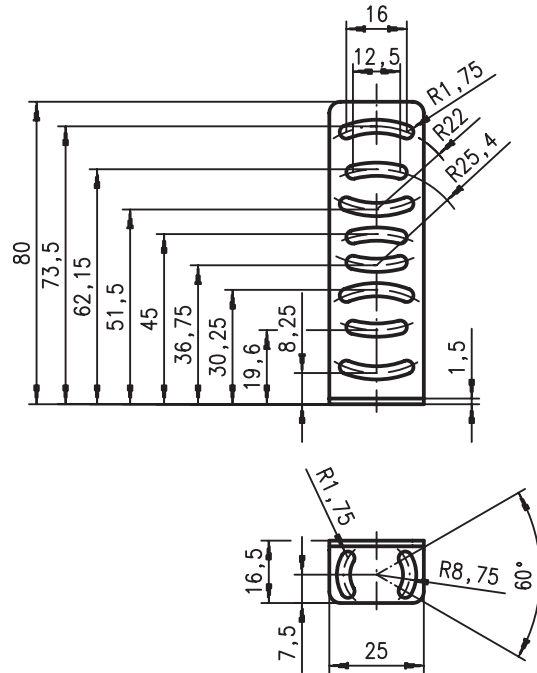
Part

BT 25 (Part No. 500 40269)



Mounting bracket for 25 series

Dimensioned drawings

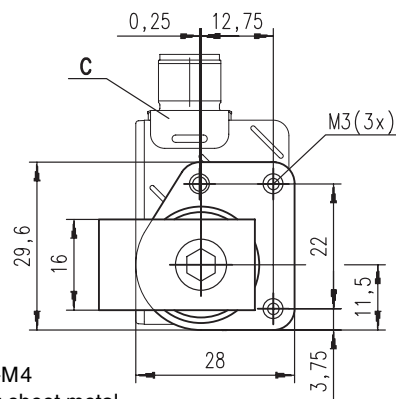
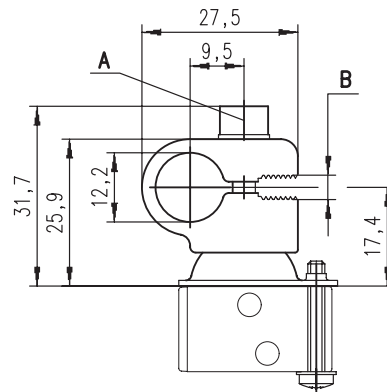


UMS 25-D12 (Part No. 500 40270)



Mounting system for 25 series, 713 series and Reflectors MTKS 50x50, TKS 50x50.1

- Through-hole mount with rod D = 12mm
- Clamp-mounting on cheeks/sheet metal



- A Screw DIN 912-M4
- B Slit for clamping sheet metal
sheet metal thickness: 1.5 to 3mm
- C Sensor