



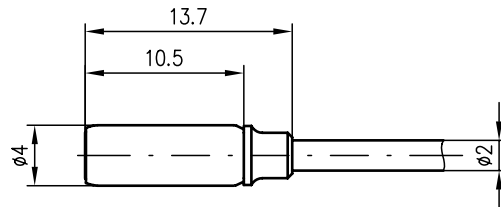
LS 31/LS 40

Throughbeam photoelectric sensor

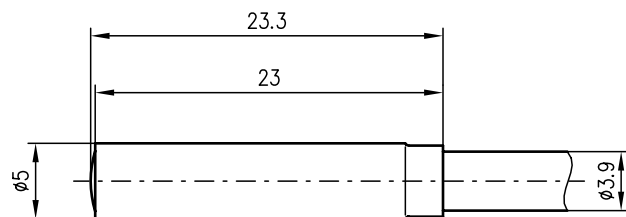


Dimensioned drawing

LS 31



LS 40



500mm



- Miniature construction enables application in limited spaces
- Metal construction offers high firmness
- Scratch resistant glass cover
- High insensitivity towards soiling and shocks
- Through selection of appropriate amplifiers optimally adaptable to applications



We reserve the right to make changes • MS_a04e.fm

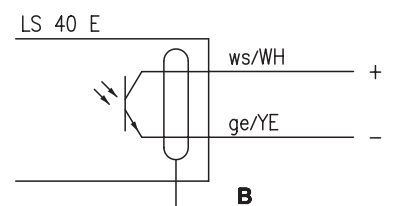
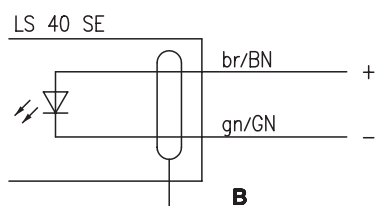
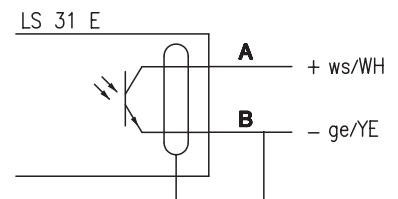
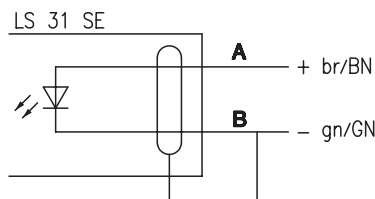


Accessories:

(available separately)

- Amplifier for mini photoelectric sensors, e.g.
 - VS 9/1 (Part No. 500 00632)
 - IVS 9/4.8 (Part No. 500 12303)
 - VS 27/24 (Part No. 500 82005)
 - IVS 28/44.8 (Part No. 500 19808)

Electrical connection



- A** Insulated wire (tr/TR or ws/WH)
- B** Shield



Specifications

	LS 31	LS 40
Optical data		
Operating range ¹⁾	0 ... 500mm	
Light source	LED (modulated light)	
Wavelength	880nm	
Electrical data		
Transmitter	GaAs	
Transmitting current	max. 200mA at D=0.05	
Receiver	Si phototransistor	
Inverse voltage U _{CEO}	max. 35VDC	
Mechanical data		
Housing	stainless steel V2A	aluminium red anodised
Optics	plastic	glass
Weight	approx. 40g	70g
Cable length	2000mm	
Cable cross-section	0.14mm ²	2x0.14mm ² +shield
Cable type	sheathing PVC internal conductor polyethyl- ene	
Environmental data		
Ambient temp. (operation/storage)	-20°C ... +60°C/-30°C ... +70°C	
Protection class	IP 65	

1) The throughbeam photoelectric sensor operating range depends on the choice of the amplifier

Tables

Diagrams

Order guide

	Designation	Part No.
Transmitter and receiver	LS 31	
Transmitter	LS 31 Se	500 82029
Receiver	LS 31 E	500 82030
Transmitter and receiver	LS 40	
Transmitter	LS 40 Se	500 10157
Receiver	LS 40 E	500 10158

Remarks

- If a cable lengthening should be necessary, make sure that the shield is lead continuously.
- **LS 31**
Opening angle ± 12°